

Emergency Management Plan



EAST ADELAIDE
SCHOOL



Government of South Australia
Department for Education

Incident response group

Each site will have an Incident Response Group (IRG) organised during an actual or imminent occurrence of an emergency. The group will be responsible for implementing the action plans in response to various situations, in accordance to the Emergency Management Plan.

Figure 1 below shows an *example* of an Incident Response Group and includes **mandatory roles** of an **Incident Controller**, a **Communications Officer** and an **Operations Officer**. In the case of smaller sites, the Communications Officer and Operations Officer may be the same person or, where appropriate, all three roles may be performed by the same person.

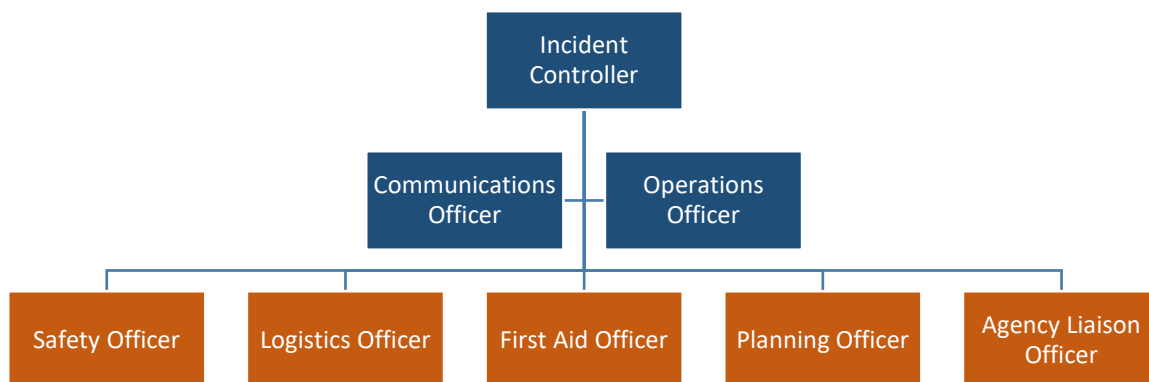


Figure 1 Example of an Incident Response Group, including mandatory (blue) and optional roles (orange)

Summary Table for Incident Response Group - Roles and Responsibilities

Role	Responsibilities	
	Following enactment of initial emergency response	Post emergency
Incident Controller	Provides leadership, directs and coordinates resources to ensure the safety of occupants at the site	Collates relevant information from various members of the IRG. Provides input to facilitate review of the actions taken and recommendations to amend plans
Operations Officer	Oversees the implementation of the relevant action plans. Responsible for managing, supervising and monitoring ongoing operations.	Assesses damage to property and to restore facilities and services.
Communications Officer	Manages and monitors all communications with internal and external agencies e.g. Education central office, emergency services or parents/caregivers	Issues communiques for staff, students, parents/caregivers and the community. Attends to queries relating to the incident.
Safety Officer	Works closely with other members to ensure work, health and safety of occupants at the site during the incident.	Reviews the safety of the site and its facilities. Makes recommendations to mitigate resultant risks.
Logistics Officer	Manages the logistical needs, including equipment, services and manpower to facilities the operations.	Reviews the status of the emergency equipment and services. Makes recommendations to reinstate them.
First Aid Officer	Administers first aid to occupants. Documents occurrences of illnesses and injuries requiring treatment.	Reviews the status of the first aid equipment. Makes recommendations to reinstate them.
Planning Officer	Collects and evaluates information related to the incident and resources. Formulates strategies to mitigate identified risks for development for implementation by the Incident Controller.	Liaises with the Incident Controller and Operations Officer to review the incident and risk identified during the emergency. Make recommendations to enhance the plan.
Agency Liaison Officer	Assists the Communications Officer with liaison with internal and external agencies.	Assists the Communications Officer in the issuance of communiques and to attend to queries related to the incident.



Site profile

Site Name	East Adelaide School
Address	57-59 Second Avenue St. PETERS SA 5069 SA 5069
Telephone	8362 1622
Email	dl.1036.info@schools.sa.edu.au
Hours of operation	8.15am – 4.00pm

Staff/student information

Number of current enrolments	554
Number of staff	87
Proportion of staff disability/health factors (%)	0
Proportion of student with disability/special education needs (%)	0



Tones used for activation of emergency procedures

Shelter in place

Alarm tone/alert method used	Siren/Sentral Message
Duration/pattern of alarm tone	Short Rapid (On/Off Tone)

Lockdown

Alarm tone/alert method used	Siren/ Sentral Message
Duration/pattern of alarm tone	Short Alternating Tone

Onsite evacuation

Alarm tone/alert method used	Siren
Duration/pattern of alarm tone	Long Sweeping (Low to High Tone)

Offsite evacuation

Alarm tone/alert method used	Siren
Duration/pattern of alarm tone	High Sweeping Tone
Method used to inform building occupants when evacuation is to an alternative location	Mobile Phone/ Training of planned off-site evacuation point

Student collection protocol

Student attendance record	Confirmed process in place	Yes
Student collection during emergency	Confirmed process in place	Yes

